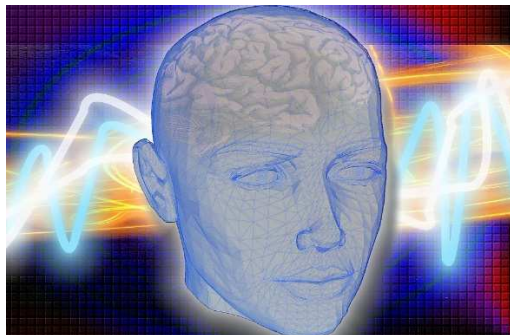
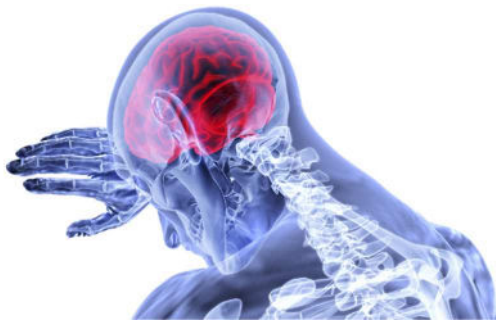




Brain and Head Injury Fact Sheet.

An Essential Guide to Brain and Head Injury Cases.

Each year up to 11,000 people in Ireland are admitted to hospital with a head injury with a further 10,000 suffering from a stroke. Acquired Brain Injury (ABI) Ireland estimate that up to 35,000 people in Ireland between the ages of 16 – 65 live with long-term problems following brain injury.



Causes of Brain Injury

Our experience of representing people who have suffered brain injuries include the following:

- *at work*
- *in serious road traffic accidents*
- *motorbike accidents*
- *serious assaults*
- *falls from a height*
- *sporting injuries*
- *pregnancy & birth injuries*
- *surgical error*
- *medical misdiagnosis & malpractice*

“Ronan fought tooth and nail and obtained a settlement far beyond our expectations.” Client Testimonial

Types of Brain Injury

Acquired Brain Injury (ABI) is defined as brain damage sustained after birth. Traumatic Brain Injury (TBI) is defined as an injury to the brain caused by trauma to the head. Traumatic brain injuries are classified into 3 categories of severity as follows:

1. **Mild.** Symptoms typically include loss of consciousness < 30 minutes. Initial Glasgow Coma Score of 13 – 15. Post-traumatic amnesia < 24 hours.
2. **Moderate.** Loss of consciousness of 30 minutes - 24 hours. Initial Glasgow Coma score of 9 – 12. Post-traumatic amnesia 24 hours - 7 days.
3. **Severe.** Loss of consciousness > 24 hours. Initial Glasgow coma score of 3 – 8. Post-traumatic amnesia > 7 days.

What are the effects of a brain injury?

A brain injury is often referred to as a 'hidden disability' because the person may have no obvious physical difficulties but there can be a significant impact on their behaviour and daily life. Each brain injury is different. Consequently, each person is affected in different ways. However, there are some common symptoms present after traumatic brain injury as follows;



Common Symptoms

- fatigue
- irritability
- loss of balance/dizziness
- loss of senses
- headaches
- memory loss
- poor concentration/attention
- sleep disturbance
- depression/anxiety
- behavioural difficulties
- seizures

Rehabilitation

Rehabilitation in the days and months following a brain injury is vital to achieve the best possible outcome. The duration of rehabilitation will be determined by the severity of the brain injury. Although initial medical care for a brain injury may well be available for restricted periods at the National Rehabilitation Hospital, Dun Laoghaire, Co. Dublin, ongoing specialist brain injury rehabilitation will come at a significant financial cost. It is vital that rehabilitation is privately funded as soon as possible which will involve the instruction of a range of medical experts called the rehabilitation team.



Rehabilitation Team

- Speech & language therapy
- Rehabilitation Assistant
- Vocational rehabilitation
- Physiotherapy
- Neuro occupational therapy
- Neurocognitive & neuropsychological input
- Neuro ophthalmology
- Disability Architects
- Social Worker
- Neuro Radiologist

“Sonya pulled out all the stops and went way beyond the call of duty to ensure that we had world renowned medical experts and legal counsel advising us on our case.” Client Testimonial

Do I or a Loved One Have a Case?

At Sellors, one of our expert solicitors will take detailed information from you and your family during our initial consultation or home visit. Thereafter, we critically assess the merits of your case. Sometimes further investigations may be required before we can tell you whether there are sufficient grounds to proceed. We will guide you and your family with strength, sensitivity and, above all, expertise encompassing both legal and medical knowledge.

Are there time limits to pursue a case?

In short, yes. Strict time limits apply to all personal injury cases including head and brain injuries. The time limits differ depending on the area of law. Special rules apply to minors under the age of 18 and those individuals who lack capacity to make decisions for themselves. Generally speaking, a two-year time limit will apply to accidents and incidents which result in head and brain injuries. It is advisable to seek expert legal advice as soon as possible as cases of this nature are complex and require investigation on three separate distinct fronts: (1) liability; (2) rehabilitation; and (3) quantum.

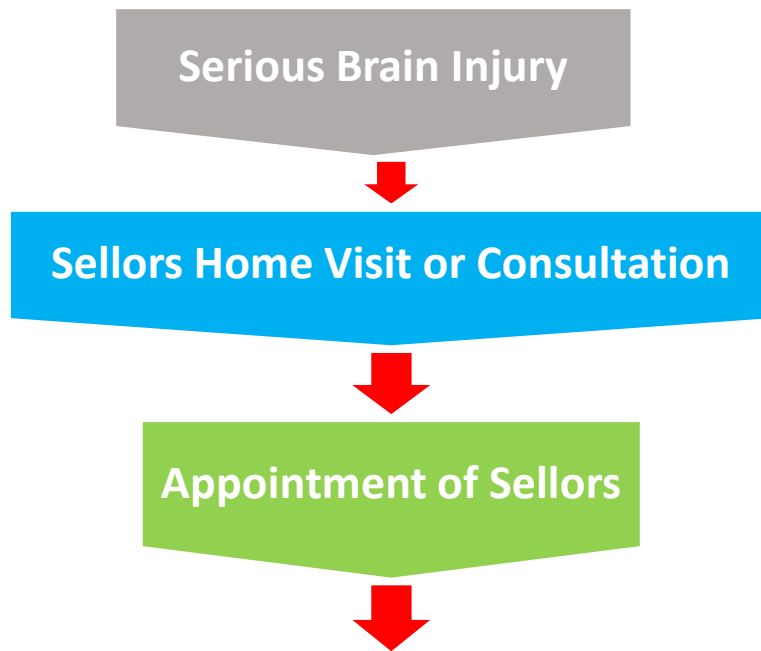
Will I have to go to Court?

A common question. The vast majority of head or brain injury cases do not proceed to hearing at Trial. Please do not worry – you and your family are in safe hands. We ensure you and your family will have all the help and support you need. In the unlikely scenario that your case goes to Trial, we use our vast experience to guide you every step of the way with strength and sensitivity.

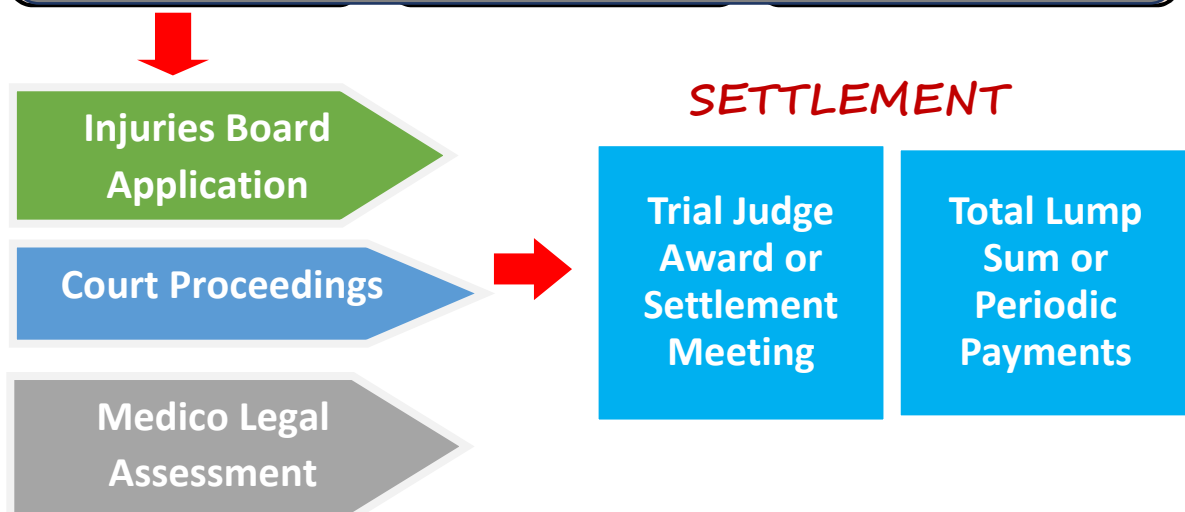
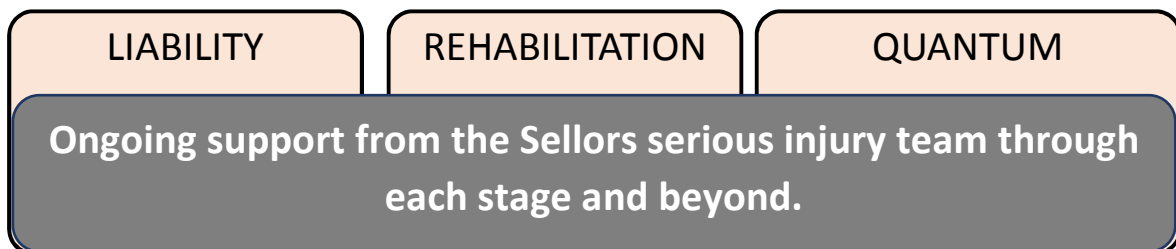
What Will the Legal Costs Be?

The legal costs associated with a head or brain injury case will depend on the unique circumstances of each and every case. Each head or brain injury is different and Sellors provide a bespoke legal advice and support service to reflect the severity of the brain or head injury. At Sellors, we tell you at the outset what our legal fees are likely to be and update these as the case progresses so that there are no surprises at the conclusion of the case.

The Sellors Litigation Journey



*The case advances on 3 separate fronts:
Liability, Rehabilitation and Quantum*



What type of compensation may I receive?

Compensation is the sum of money paid to victims of serious injury including brain or head injuries to repay financial losses and physical or psychological pain and suffering. There are two main categories of compensation; general damages and special damages. General damages refer to compensation for pain and suffering and loss of lifestyle suffered as a result of a head or brain injury. Such awards are limited in Ireland and guidelines are available to the Courts for particular injuries. Special damages refer to an individual's specific financial losses caused by a head or brain injury.



Special Damages

Such headings of compensation typically include but not limited to the following;

- *Past & future loss of earnings & pension*
- *Future medical treatment costs*
- *Rehabilitation & therapy costs*
- *New or adapted housing costs*
- *Provision of nursing or domestic care*
- *Aids & equipment costs*
- *Transport costs*

"Dervla is one of today's rising legal professionals." Client Testimonial

Why Choose Sellors?

Our serious injury team are available 24/7 to assist you and your family in times of crisis and emergency. We strive to provide clients nationwide with access to high quality medical care and support to enable the person with a head or brain injury to improve their quality of life, increase independence and provide financial security for the future. We are there for as long as you and your family need us, providing after-care support long after the settlement of your case.

Meet our Serious Injury Team



Ronan Hynes *Experienced litigator with a proven track record*
Partner
e: rhynes@sellors.ie
t: 061 414 355



Sonya Morrissy Murphy *A powerful and passionate litigator*
Associate Solicitor & Litigation Manager
e: smmurphy@sellors.ie
t: 061 414 355



Derek Walsh *Compassionate and results driven*
Solicitor
e: dwalsh@sellors.ie
t: 061 414 355



Dervla Beirne *A rising star*
Solicitor
e: dbeirne@sellors.ie
t: 061 414355



Contact Us

We are available 24/7 to discuss any issues or concerns you may have. Contact a member of our dedicated Serious Injury Team today.



Telephone: 061 414 355

Web: www.sellors.ie

Email: info@sellors.ie

Address: Limerick Office: 6-7 Glentworth Street, Limerick

Dublin Office: 39 Fitzwilliam Square, Dublin 2

Social Media:



SellorsLaw



SellorsLawLimerick



Sellorsolicitors

sellors.ie

info@sellors.ie

061 414 355